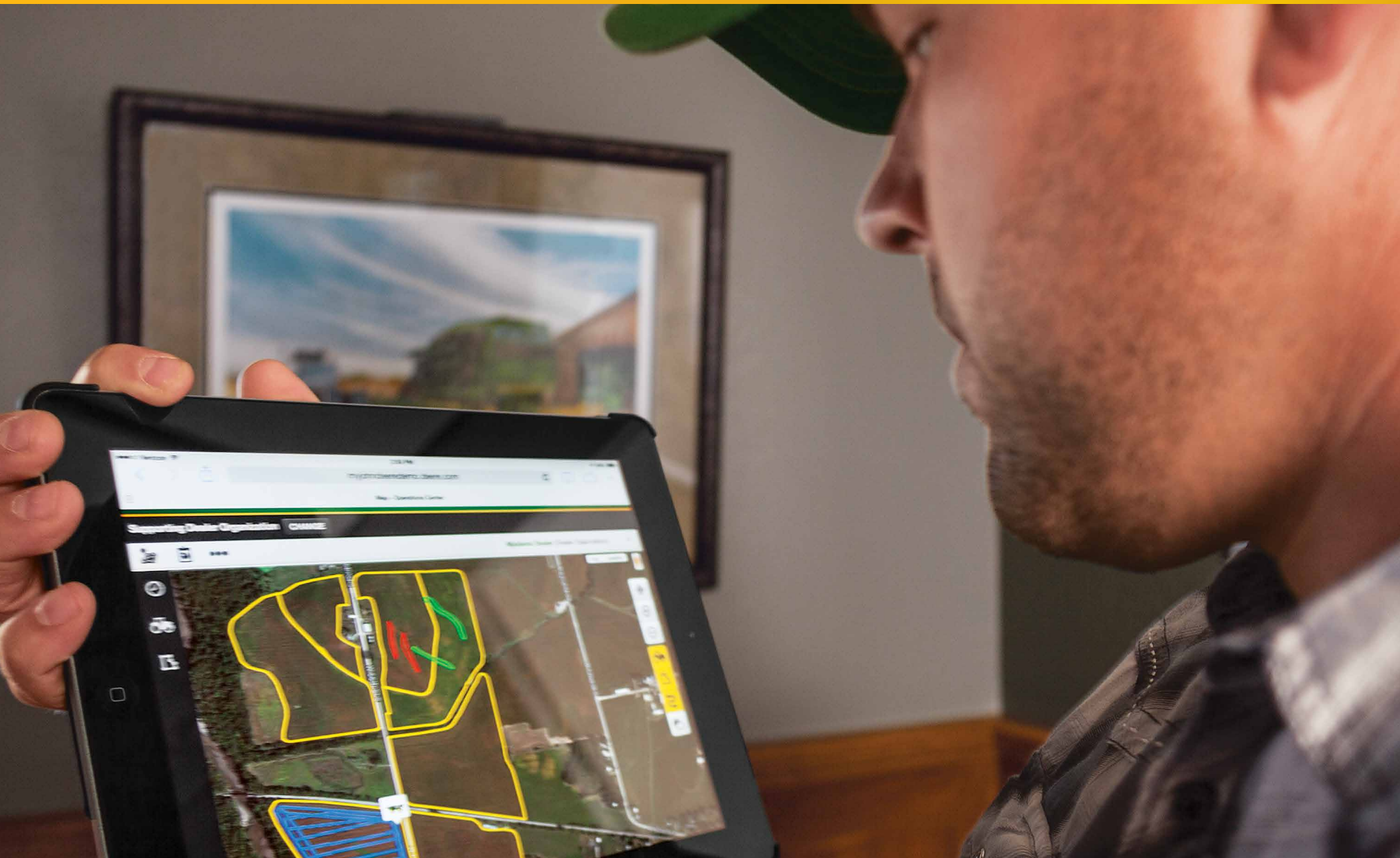
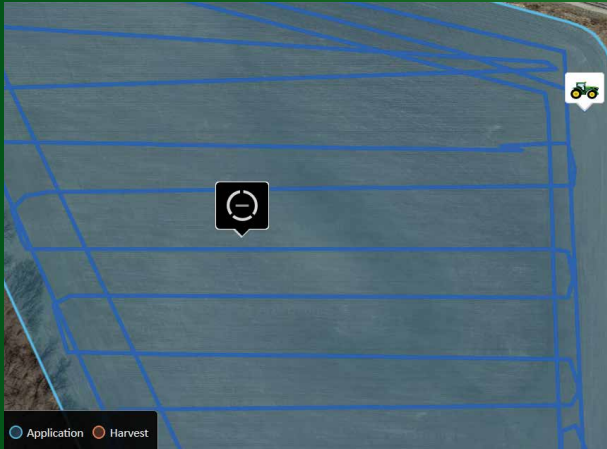


JDLink™ Connect

Easy, reliable connection between you and your machines



JDLink™ Connect



SEE critical and timely information about your machines, online.

- Use **Location History** to see where your machines are and what ground they've covered. Get a clear sense of progress so you can easily plan next steps.
- Analyze your **Machine Performance** in order to plan for future jobs. By tracking measures such as fuel rate, ground speed, and idle time, you can identify opportunities for improved performance.

MOVE data to and from your machines – easily, securely, and wirelessly.

- Let **Wireless Data Transfer** save you time and hassle by automatically and securely moving production data into the John Deere Operations Center. Easily send setup files and prescriptions to your machines in advance or as plans change.

SUPPORT your machines and people, to keep your operation running.

- Use **Remote Display Access** to check on work in progress or help an operator in need.
- Identify issues promptly with **Machine Alerts** for you and your dealer.
- Let your dealer connect with your machine through **Service ADVISOR Remote**, to diagnose what's needed to keep you running.



This literature has been compiled for worldwide circulation. While general information, pictures, and descriptions are provided, some illustrations and text may include finance, insurance, product options and accessories NOT AVAILABLE in all regions. PLEASE CONTACT YOUR LOCAL DEALER FOR DETAILS. John Deere reserves the right to change specification, design and price of products described in this literature without notice. John Deere, the leaping deer symbol, and John Deere's green and yellow trade dress are the trademarks of Deere & Company.